

A Termite's Life

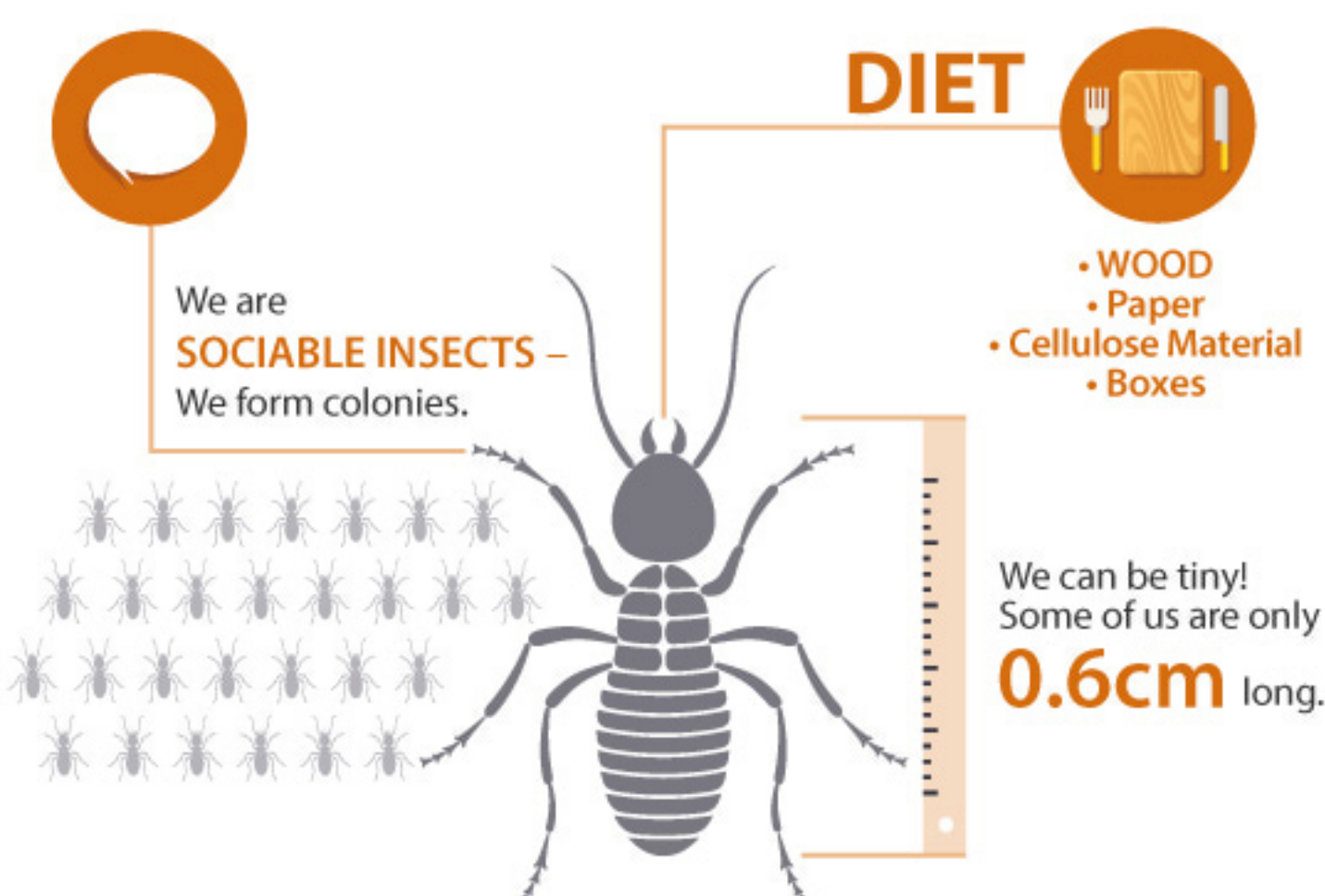
WHO ARE WE?

DIET

- WOOD
- Paper
- Cellulose Material
- Boxes


We are **SOCIABLE INSECTS** – We form colonies.

We can be tiny! Some of us are only **0.6cm** long.



OUR FAVOURITE WEATHER

Rain or shine, we work all year round.
We thrive best in **WARM and MOIST ENVIRONMENTS.**



OUR FAMILY TREE

01 DAMPWOOD TERMITES

We dwell in OLD TREE STUMPS, ROTTING LOGS and pieces of BURIED TIMBER.

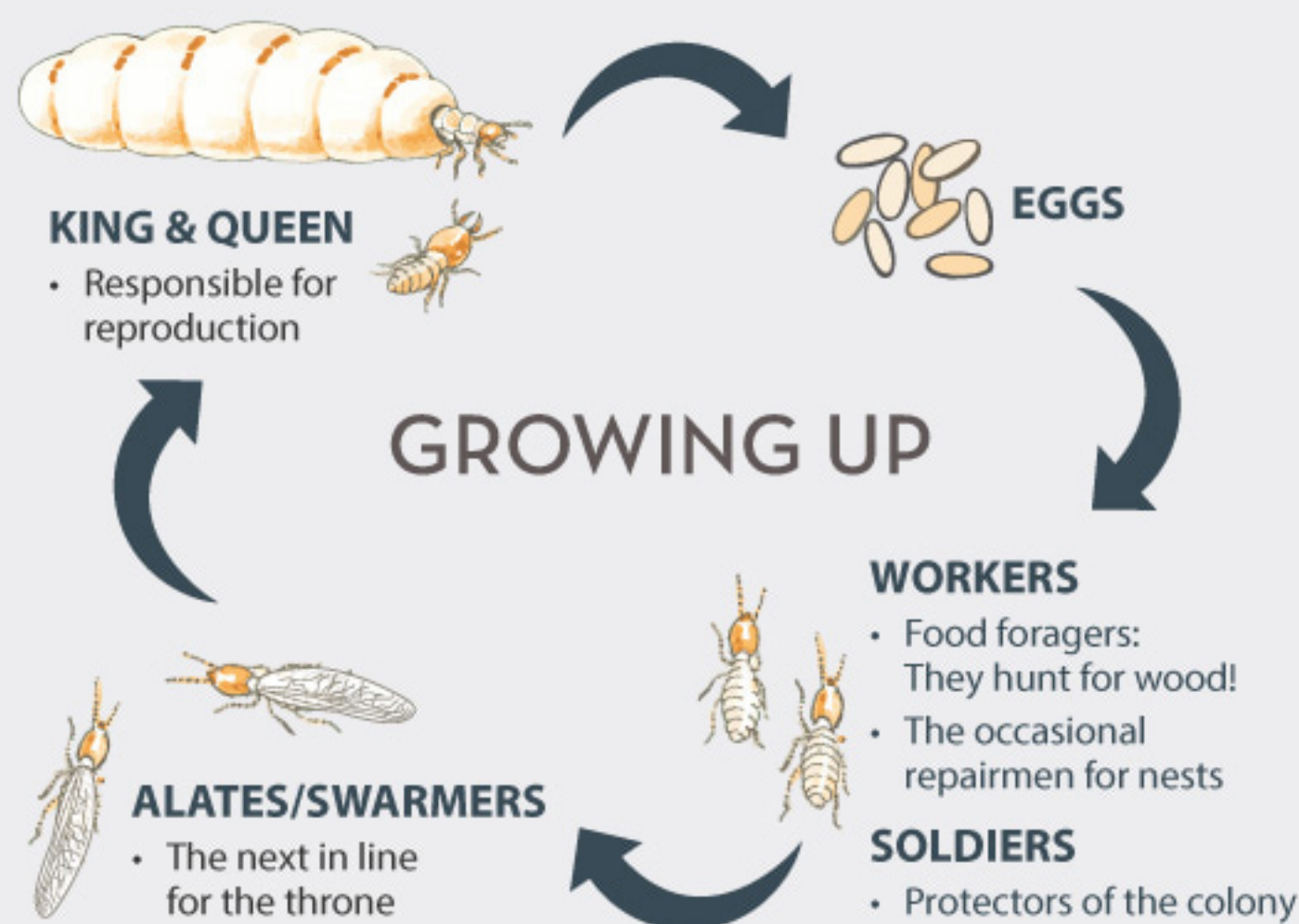
02 DRYWOOD TERMITES

You can find us within DRY WOOD and above ground in TIMBERS. We are also self-sufficient – we hardly need external source of moisture or soil!

03 SUBTERRANEAN TERMITES

We need SOIL to build nests and rely on them for moisture. We construct sheltered mud tubes to find food. We COME IN BIG NUMBERS and navigate our way through cracks as small as 1.5MM.

OUR SOCIAL SYSTEM



DID YOU KNOW?

The queen termite can lay up to **160,000** eggs per year

Lifespan of a queen termite: **5 – 10 YEARS**

GO FIGURE!

WORKERS: forms **95%** of the colony

SOLDIERS: forms **5%** of the colony

